

LEIXIR

Dental Laboratory Group



DIGITAL DENTURES



CENTERS OF EXCELLENCE

About Us

Leixir Dental Laboratories are full-service state-of-the-art dental labs which offer a complete range of leading-edge dental products. Our labs are located strategically to provide dentists with superior services across the globe. Our labs represent a perfect balance between innovative technology and traditional methods. We are the leader in state-of-the-art cosmetic and restorative dentistry, and our labs are committed to providing you the best, most up-to-date products and services.



DIGITAL



AESTHETIC DENTISTRY



SURGICAL AND REMOVABLE



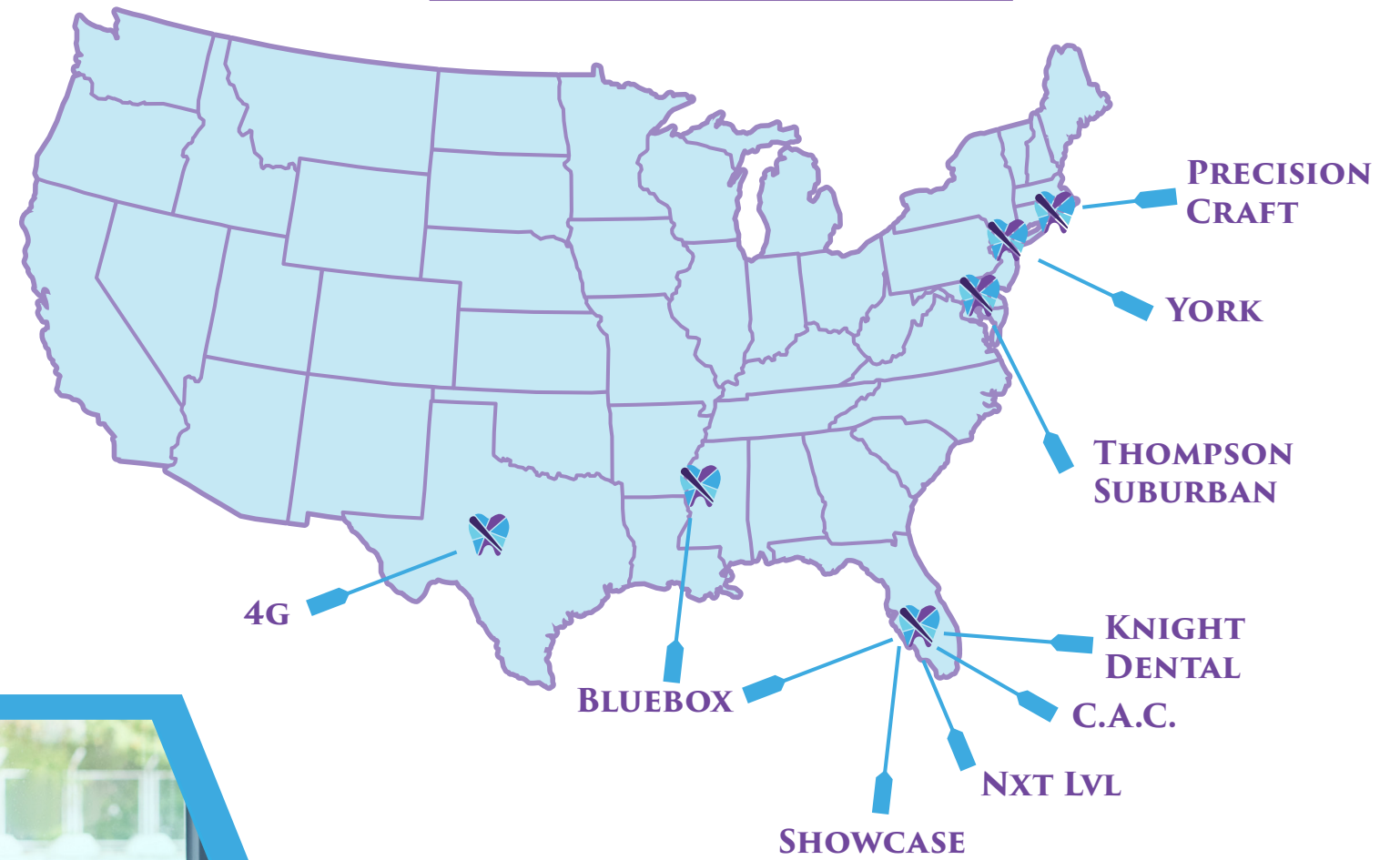
IMPLANTS AND FULL ARCH



[LEIXIR.COM/HEARTLAND](https://leixir.com/heartland)



United States



India



RX CHECKLIST

PATIENT NAME:
Last Name / First Name

GENDER: (RECOMMENDED)

Male Female

DENTURE WORKFLOW:

Digital Immediate Denture
Please select what teeth will be removed:

ALL (Default)

Teeth #s _____

Digital Denture Reline (with wash or without)

Duplicate of Existing Denture on File
** Duplicate denture is available for all denture types*

New Denture (No existing denture)

Digital Replacement Denture
** Utilizing patients existing denture to make a brand-new denture*

DENTURE TYPES:

Elite Digital Printed Denture
** Printed teeth standard*

add milled teeth (+\$40)

add characterization (+\$40)

Premium Digital Printed Denture

Standard Digital Printed Denture
** If not listed, default will be "Standard"*

STAGE:

Custom Tray

Bite Rim

Try-in
** First Try-in included, additional try-in \$40*

Digital Smile Design
** Add "Digital Mock-up" in the digital Rx notes to request one*

Finish Final

NOTES:

- If drop down is not available for the above requirements, please list the information in the notes.
- The more information to the lab, the better the outcome!

Duplicate of Existing Denture on File
** Duplicate denture is available for all denture types*

New Denture (No existing denture)

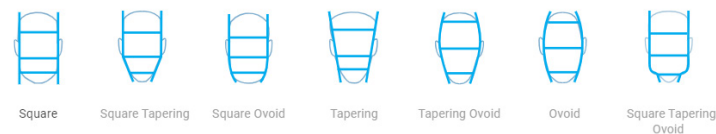
Digital Replacement Denture
** Utilizing patients existing denture to make a brand-new denture*

DENTURE DETAILS:

Tooth Shade

Denture Gingival Shade
** If not listed, default will be "Standard Pink"*

TOOTH SHAPE / MOULD:



PHOTOS REQUIRED:

- Full Face Smiling, Profile and Retracted in Occlusion
- For iTero: Before sending cases, you can now attach photos to the Rx, from myitero.com. Once uploaded, return to the scanner and hit send.

DIGITAL PRINTED DENTURE COMPARISON CHART

	STANDARD	PREMIUM	ELITE
BASE MATERIAL	Lucitone Digital Print	Lucitone Digital Print	Lucitone Digital Print
TOOTH MATERIAL	Lucitone Value Tooth Resin	Lucitone IPN Premium	Lucitone IPN Premium or PMMA
FRACTURE RATE	N/A	Up to 4x Stronger than competitive materials	Up to 4x Stronger than competitive materials
BASE SHADES AVAILABLE	3	5	5/ Custom Coloring Optional
TOOTH SHADES AVAILABLE	A1, A2, A3, B1	16 Vita Shades	16 Vita Shades + Optional Coloring
BLEACH SHADES AVAILABLE	BL3	BL1, BL3	BL1, BL3
WARRANTY	5 Years	5 Years	5 Years
DIGITAL FILE STORAGE	5 Years	5 Years	5 Years

LEIXIR IOS DENTURE WORKFLOWS

DIGITAL IMMEDIATE DENTURE

2 Appointments

APPOINTMENT 1

- Scan both the upper & lower arches with a bite prior to extractions
- Remember to capture the palate, buccal and lingual extensions

APPOINTMENT 2

- Deliver Immediate Denture
- Refer to "Digital Reference Denture" Workflow after healing and new denture is needed

DIGITAL DENTURE RELINE

(Exact Replica)
2 Appointments

APPOINTMENT 1

- Take a complete scan of the existing prosthetic extra orally (outside of the mouth) after performing a light/medium body Final Impression
- Scan opposing arch
- Re-insert prosthetic, including Final Impression, before capturing the bite

APPOINTMENT 2

- Deliver Final Denture

DIGITAL REPLACEMENT DENTURE

(With Current Prosthetic)
2 or 3 Appointments

APPOINTMENT 1

- Take light/medium body Final Impression on existing denture(s), Verify VDO and notify Leixir of any desired changes
- Take a complete scan of the existing prosthetic extra orally (outside of the mouth)
- Scan opposing arch
- Re-insert prosthetic, including Final Impression, before capturing the bite

APPOINTMENT 2 (OPTIONAL, BUT RECOMMEND IF SUBSTANTIAL CHANGES ARE PROPOSED)

- Deliver Monolithic Try-in
- Try-in-can be used as a custom tray & can be used to verify VDO, mid-line & occlusion
- Scan Monolithic back to the lab with notated adjustments
- Take photos if needed

APPOINTMENT 3

- Deliver Final Denture

Photos Needed for All Workflows:

Full Face Smiling, Profile and Retracted in Occlusion

NEW DENTURE

(Fully Edentulous Patient)
3 or 4 Appointments

APPOINTMENT 1

- **OPTION 1:** Take scan of edentulous arch(s) and Leixir will send a wax rim

APPOINTMENT 2

- Follow standard procedures for capturing landmarks and dimensions
- Scan wax rim with Final Impression and send digitally OR physically mail back the wax rim to Leixir and we will re-digitize

APPOINTMENT 3

- Evaluate Try-in (VDO, mid-line, etc)
- Notate any necessary changes
- Perform Final Impression if fit is not ideal
- Take a complete scan of Monolithic Try-In and scan bite

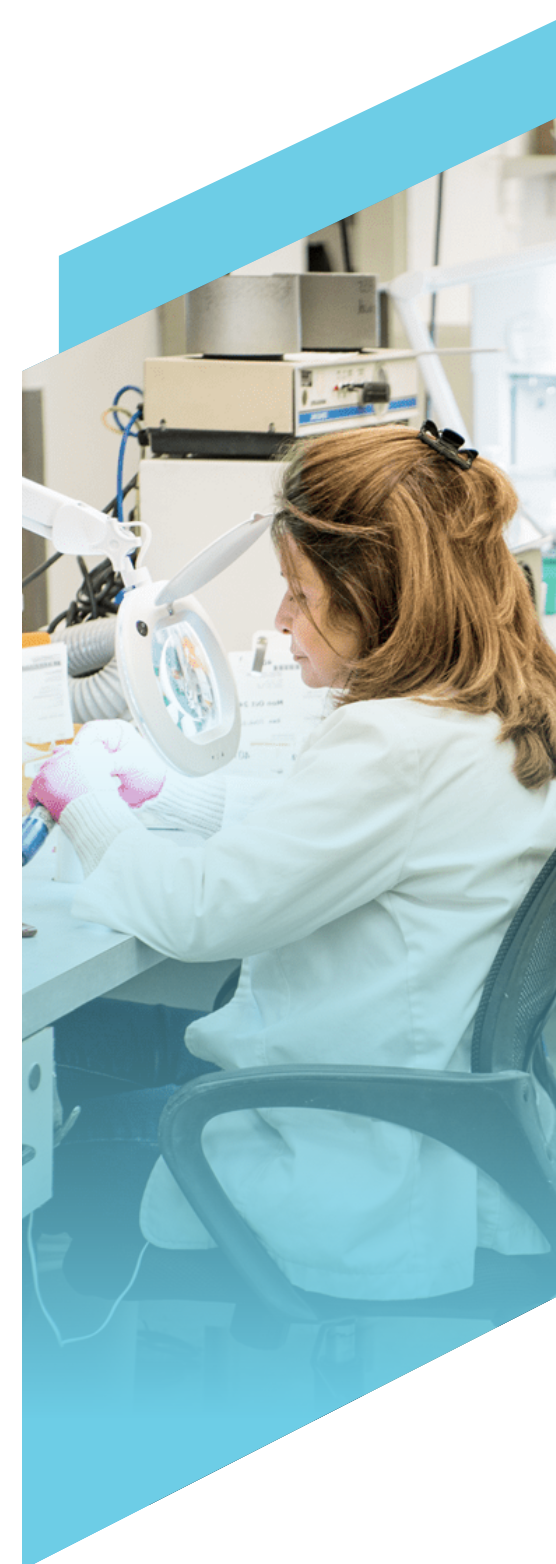
APPOINTMENT 4

- Deliver Final Denture

Scan code for more info



Leixir.com/digitaldentures

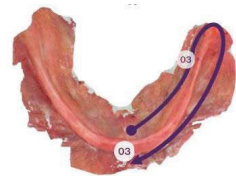


EDENTULOUS SCANNING GUIDE

TIPS FOR SUCCESS

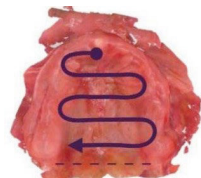
- Remove excess saliva from tissue
- Two clinicians and cheek retractors may aid in easier scanning
- Move slow and steady in a continuous pattern to allow the scanner to capture the images to build the 3D scan*
- Keep disposable sleeve lens clean and clear
- Dentist establish vertical demension with lab guidance

STEP 3: Scan lingual and buccal surfaces of opposite quadrant



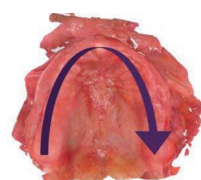
- Complete scan of the lingual surface while retracting the tongue
- Capture the retromolar pad
- Slowly roll to buccal surface, keeping a horizontal position
- Stop once you've reached the midline

STEP 4: Scan the palate



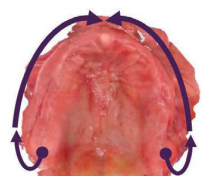
- Position wand flat on incisive papilla and press either side button to begin
- Move slowly in a wavelike motion over palatal surface back to vibrating line
- Capture the distals of both hamular notches

STEP 5: Scan alveolar ridge



- Roll onto ridge and scan to the contra-lateral maxillary tuberosity
- Stay close to the tissue when scanning to capture the entire alveolar ridge
- Move slow and steady to allow the image to build

STEP 6: Scan bilateral buccal & vestibule



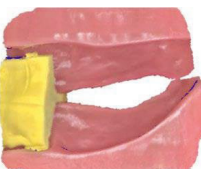
- Position wand flat on either maxillary tuberosity
- Slowly roll to buccal surface, keeping wand at angled position to capture vestibule as well
- Stop once you've reached the midline
- Repeat on opposite side and then turn wand off by pressing either side button

STEP 7: Capture the vertical



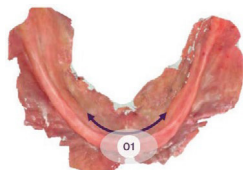
- Use a high-viscosity dental putty to create initial vertical dimension
- Place putty in mouth, and instruct the patient to slowly close to the desired position
- Mark the midline, lipline, and frenal attachments to reference when scanning the bite

STEP 8: Capture bilateral bite



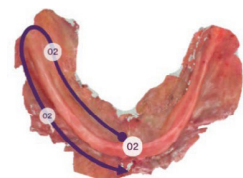
- Section putty into three, lining up landmarks
- Tap blue forward arrow to move into bite segment
- Sit patient up at 45 degree angle
- Leave contralateral putty in place when scanning the bite
- Scan right side until model comes together and turn wand off
- Repeat on opposite side

STEP 1: Scan anterior lingual ridge



- Position wand flat on the ridge at midline and press either side button to begin
- Slowly roll into lingual to capture frenum and anterior lingual ridge

STEP 2: Scan lingual and buccal surfaces of one quadrant



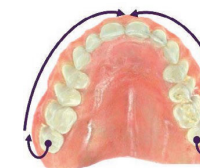
- Complete the scan of the lingual surface while retracting the tongue
- Capture the retromolar pad
- Slowly roll to the buccal surface, keeping a horizontal position
- Stop once you've reached the midline

DENTURE SCANNING GUIDE

TIPS FOR SUCCESS

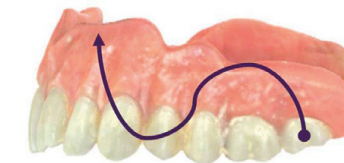
- Remove moisture and excess PVS material from denture
- Keep the wand tip flat and maintain contact with the denture when scanning
- Hold the denture still and in a stable position while scanning
- Move slow and steady in a continuous pattern, allowing the scanner to capture the images to build the 3D scan *
- Keep disposable sleeve lens clean and clear of moisture and debris

STEP 3: Scan buccal quadrants



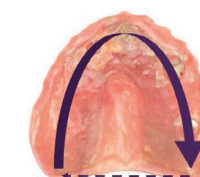
- Position wand flat on either terminal molar
- Slowly roll to buccal surface, keeping a horizontal position
- Stop once you've reached the midline
- Repeat on opposite side

STEP 4: Scan bilateral buccal flanges



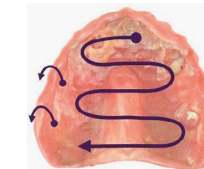
- Move the wand in a wavelike motion to capture teeth and the contour of the buccal flange
- Repeat on the opposite side
- Press either side button on wand to pause the scan
-

STEP 5: Scan intaglio



- Position wand on posterior ridge and press either side button to begin
- Scan intaglio around the arch, including the posterior seal
- Angle the wand closer to the denture to capture hard-to-reach surfaces, such as undercuts

STEP 6: Scan alveolar fossae



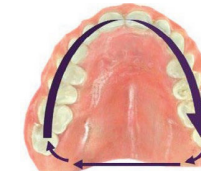
- Position wand on the labial frenum and anterior intaglio
- Move the wand in a wavelike motion across the intaglio to the posterior seal
- Wand tip should maintain contact with contours of the denture surface
- Press either side button on wand to pause the scan and tap blue forward arrow to move into bite segment

STEP 7: Scan bilateral bite



- Seat denture in the patient's mouth
- Sit patient up at a 45° angle
- Place wand between cheek and denture and have patient close
- Once the occlusal plane is centered, turn the wand on
- Move wand straight up and straight down
- Turn off wand when the bite comes together
- Repeat on opposite side

STEP 1: Scan occlusal



- Position wand flat on either terminal molar
- Scan occlusal surface around the arch to opposite side
- Capture contour of posterior seal

STEP 2: Scan palate




- Position the wand flat on the incisal surface of central incisors
- Move the wand in a wavelike motion to scan the palate
- Follow the contour of the denture palate to posterior seal

*Scan order is subject to change based on iTero scanning protocols and lab guidance. Quality of scan will vary based on clinician scanning experience and clinical conditions. © 2023. Align Technology, Inc. All Rights Reserved. Align, Invisalign and iTero among others, are trademarks and/or service marks of Align Technology, Inc. or one of its subsidiaries or affiliated companies and may be registered in the U.S. and/or other countries.

*Scan order is subject to change based on iTero scanning protocols and lab guidance. Quality of scan will vary based on clinician scanning experience and clinical conditions. © 2023. Align Technology, Inc. All Rights Reserved. Align, Invisalign and iTero among others, are trademarks and/or service marks of Align Technology, Inc. or one of its subsidiaries or affiliated companies and may be registered in the U.S. and/or other countries. A016123



INSTRUCTIONS FOR POST-CARE WITH YOUR DIGITAL DENTURE

- 
1. Always fill the sink with water, then clean your dentures over the sink.
 2. Rinse your dentures thoroughly to remove loose food particles. Use cool or warm water.
 3. Clean your printed denture with a soft bristle toothbrush using a mild soap.
 4. You can also use popular denture cleansers - just do not soak the denture overnight in any liquid!
 5. Do not sleep with your dentures in.

EMILIE GYSI RDH, PHDHP

Director of Digital
Adoption and Integration



LAUREN CROWE

Director of Corporate
Accounts



888-453-4947 (888-4-Leixir)
Immediately dial ext 2323

LEIXIR

Dental Laboratory Group

 BLUEBOX

 4G

 C.A.C.

 KNIGHT
DENTAL

 NXT LVL

 PRECISION
CRAFT

 YORK

 THOMPSON
SUBURBAN

 SHOWCASE

 EASYDENT